

輸送環境計測サービス

Cargo Environment-Measuring Service

～貨物の輸送環境(温度・湿度・衝撃)を計測するサービスです～

The service consists of measuring the environment in transit (temperature, humidity and shock).

- **貨物の遭遇する輸送環境を、定量的に把握することができます。**
The service quantifies the transport environment that a cargo might encounter.
- **温度・湿度条件の悪化した期間や大きな衝撃が発生した期間を特定でき、ダメージの原因追究に役立ちます。**
It is possible to pin down the duration in which temperature and humidity conditions deteriorated and the transport sections where large shocks occurred so that the findings can be used to investigate possible causes of any damage to the cargo.
- **乾燥剤の有用性の調査や梱包形態の改善データ取得に利用できます。**
The service can be used to study the effectiveness of desiccant agents and to obtain data to improve packing methods.

▶ **計測器をコンテナや貨物に取り付けていただくだけで、輸送中の計測ができます**
It is possible to measure during transportation just by installing the instruments to a container or cargo.



温湿度計測器のコンテナ天井面への設置例

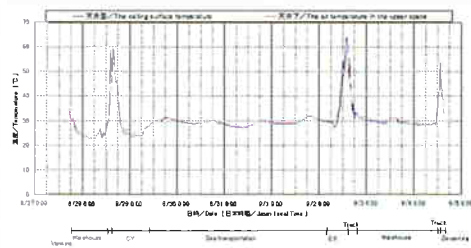
Sample: installation of a temp./humid. logger on the ceiling surface of a container.



衝撃計測器のコンテナ床面への設置例

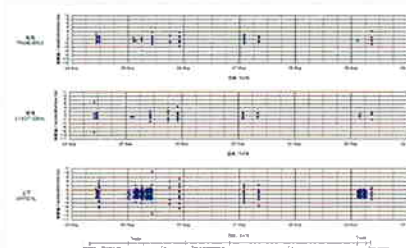
Sample: installation of a shock recorder on the floor of a container.

▶ **計測データはグラフで提出いたしますので、結果が一目瞭然です**
Since the measurement data is submitted in the form of graphs, it is easy to understand at a glance.



温度グラフ例

Example: temperature graph



衝撃グラフ例

Example: shock graph

輸送環境計測の流れ

Process flow of transport-environment measurement



お客様ご担当
Customer

弊社担当
MTI

※料金は、計測器使用料、報告書作成料を含みます。
詳細はお問合せ下さい。

The service fee includes fees for instrument use, analysis, and preparation of a report on the measurement data.
Please contact us for details.

Monohakobi Technology Institute

5th Fl., Yusen Building, 3-2 Marunouchi, 2-Chome,
Chiyoda-ku, Tokyo, 100-0005, Japan

TEL : 03-5222-7650 FAX : 03-5222-7680

E-mail : info@monohakobi.com

URL : <http://www.monohakobi.com>